





B. EDUCATE

CHAUTARI is designed with ecologically responsible features and a selection of construction materials and techniques chosen to suit the local climate and employ local workforce. The use of both passive and active solar power also contributes to making this an environmentally responsible and sustainable place. To provide climate comfort in this hot and humid site, passive ventilation strategies and sun shading are paired. The design includes rainwater harvesting and black and grey water recycling.



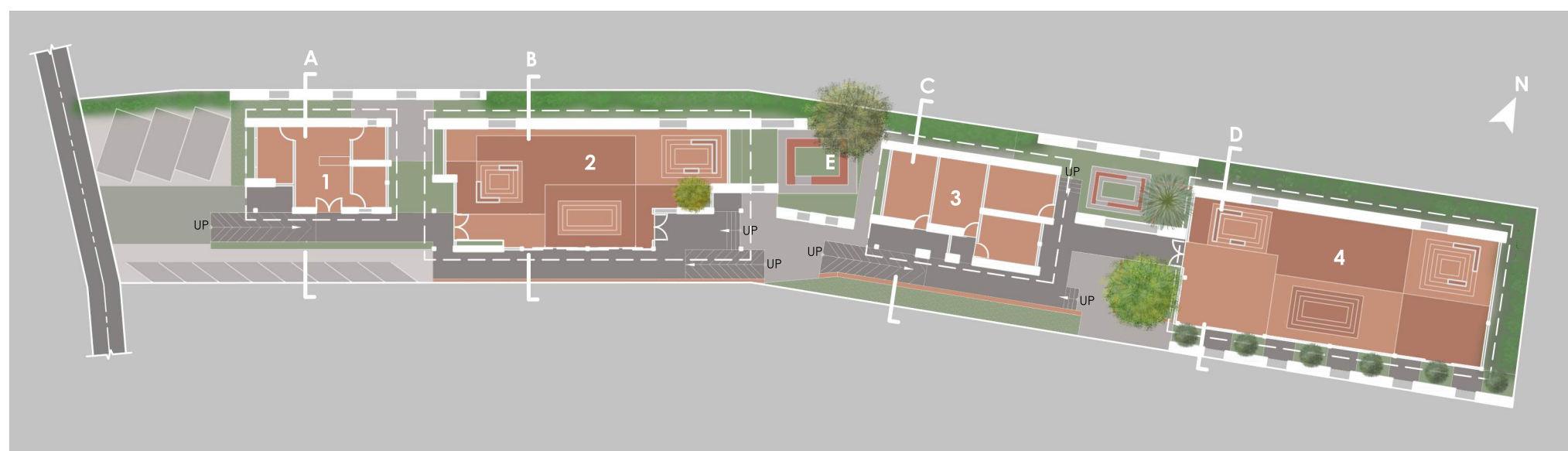
A. WELCOME



C. BUILD TRUST
Mithila Art by Ranju Yadav



D. EMPOWER



1. Office Block : 60 Sq.M

2. Training Hall-1 : 165 Sq.M (expandable to 200 Sq.M)

3. Guest Block : 80 Sq.M

4. Training Hall-2 : 200 Sq.M

PLAN 1:400

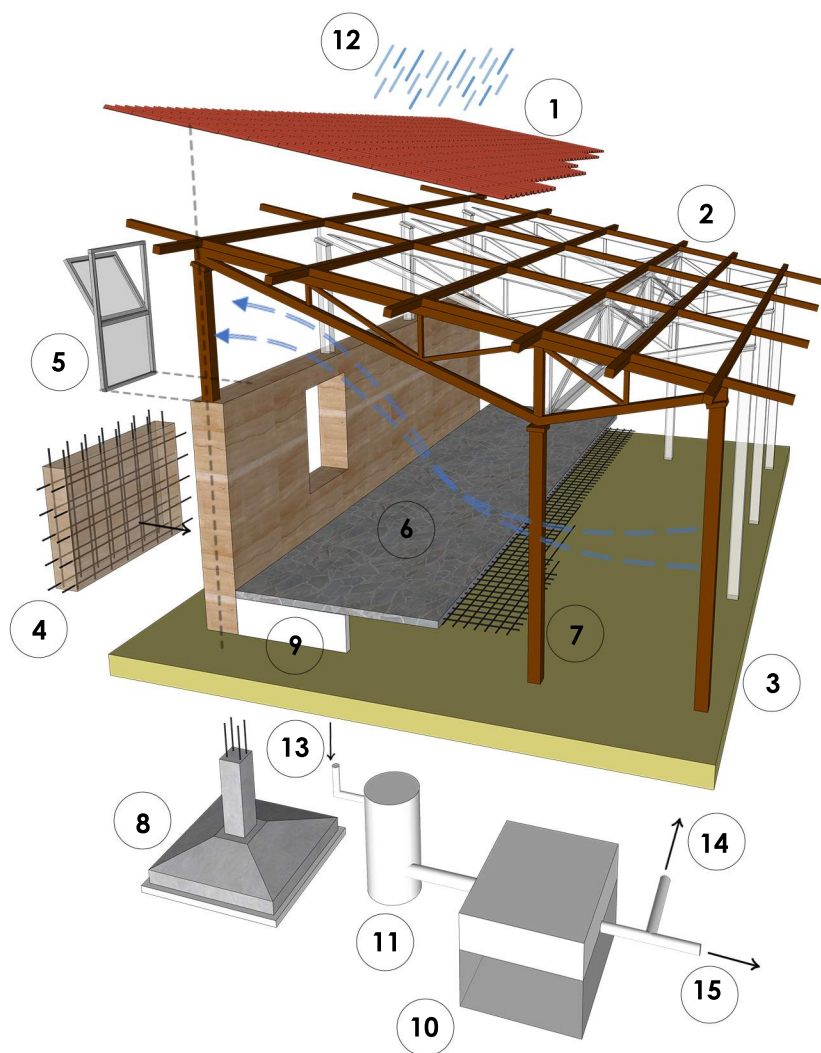


E. LISTEN

her place: a चौतारी (CHAUTARI) to meet, build trust & EMPOWER WOMEN

HP2111

1. CLAY TILES
2. ROOF TRUSS
3. GROUND LEVEL AT -600 MM
4. RAMMED EARTH WALL
5. ALUMINIUM WINDOWS
6. CONCRETE SLAB
7. 150 x 150 STEEL POST
8. 1500 X 1500 RCC FOOTING
9. WALL BENEATH PLINTH
10. RAINWATER TANK
11. RAINWATER FILTER
12. RAIN WATER
13. RAINWATER FROM GUTTER
14. RAIN WATER TO GARDEN
15. RAIN WATER TO RECHARGE
GROUND WATER



WEST ELEVATION 1:100



SOUTH ELEVATION 1:250



NORTH ELEVATION 1:250