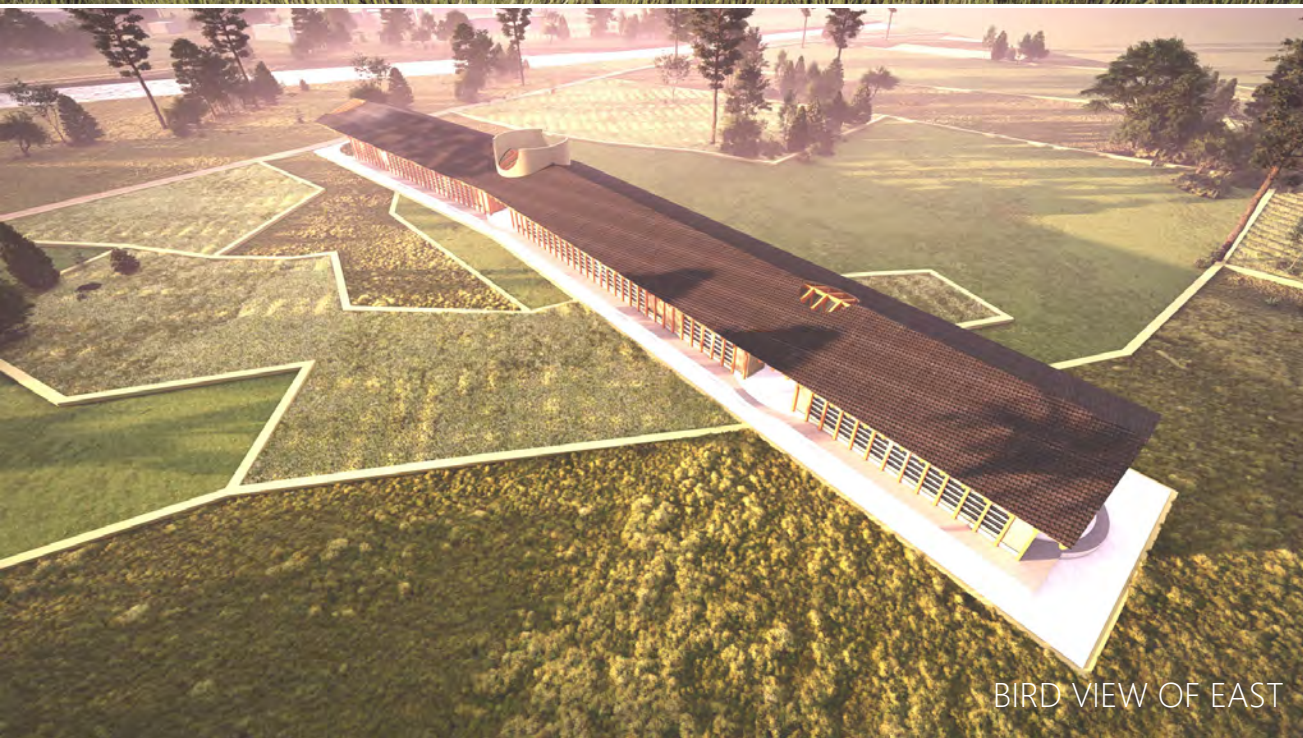


BIRD VIEW OF SOUTH



ENTRANCE VIEW



BIRD VIEW OF EAST



MODEL 2

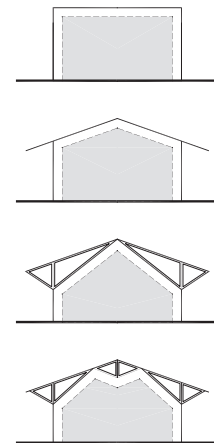


MODEL 1

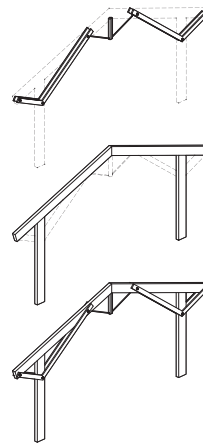


## UNDER THE ROOF

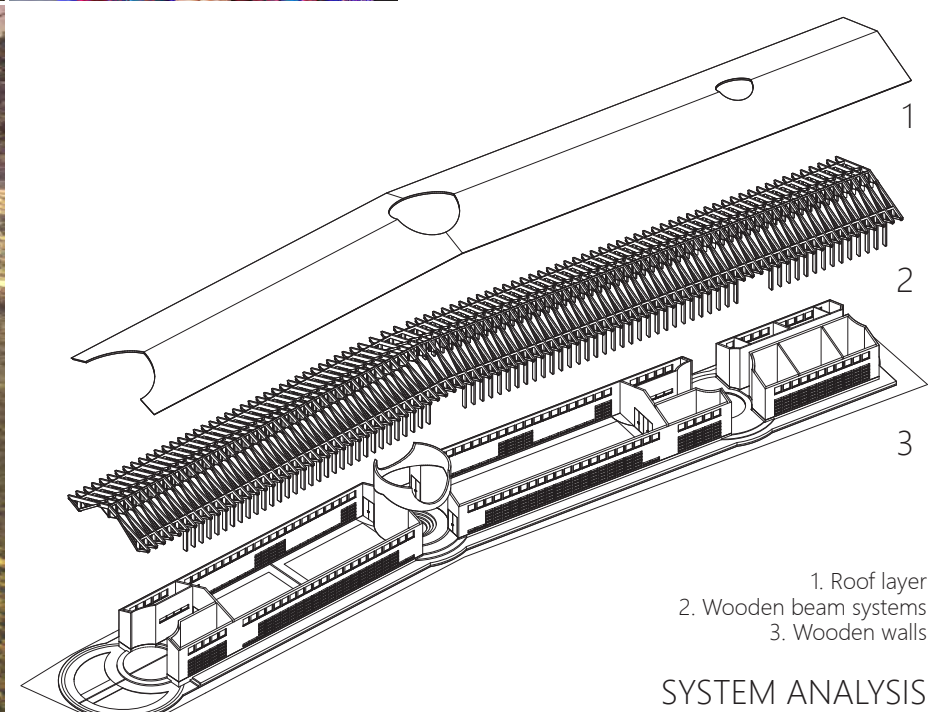
Based on the traditional Nepalese culture and the study of architectural style and female status, this design extracts the architectural elements that are in line with the characteristics of female shelter. In addition, the three outdoor plazas connect reception, training, office and service functions to form a sheltered space under the same eave.



CONCEPT



STRUCTURE



- 1. Roof layer
- 2. Wooden beam systems
- 3. Wooden walls

SYSTEM ANALYSIS

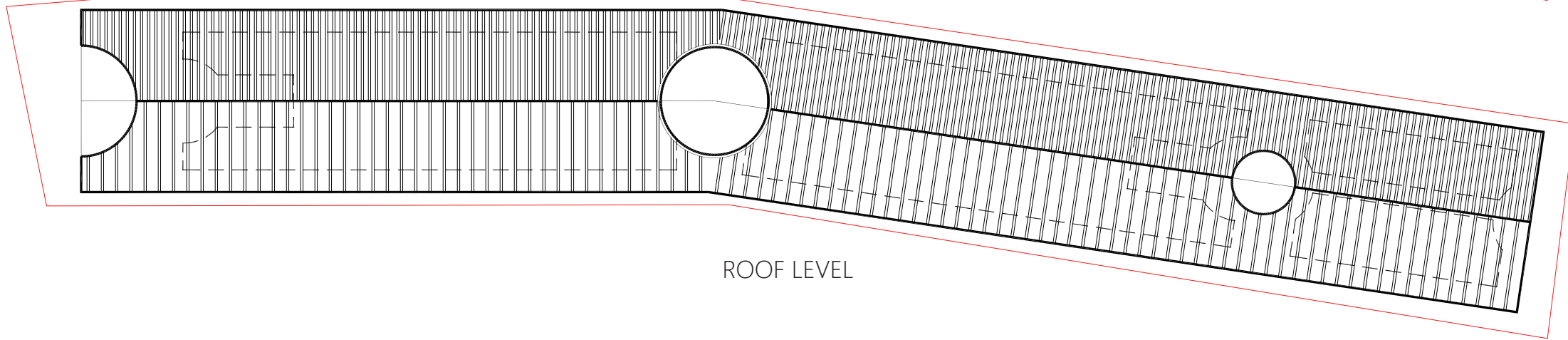
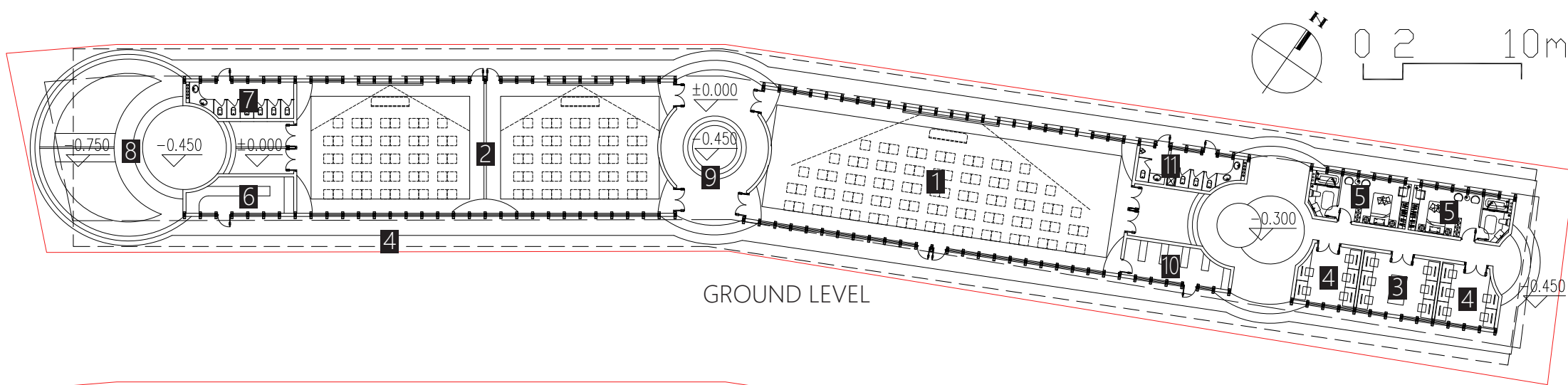


SITE PLAN

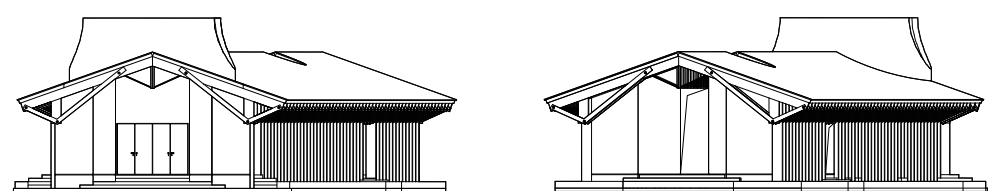




SOUTH FACADE



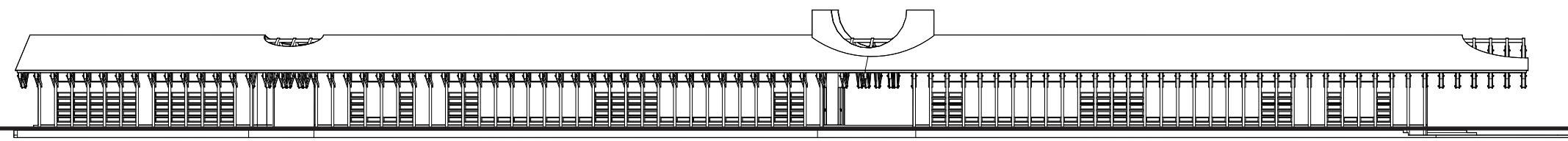
ROOF LEVEL



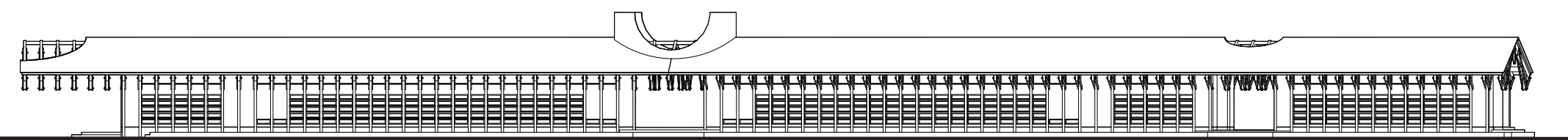
WEST ELEVATION

EAST ELEVATION

- 1. Large training hall: 197.54 m<sup>2</sup>
- 2. Martial arts/ self defence classes: 197.54 m<sup>2</sup>
- 3. Office room: 18.19 m<sup>2</sup>
- 4. Office room: 13.47 m<sup>2</sup>
- 5. Ensuite guest rooms: 17.72 m<sup>2</sup>
- 6. Reception and admin area: 14.23 m<sup>2</sup>
- 7. Washrooms: 14.23 m<sup>2</sup>
- 8. Entrance
- 9. Outdoor space
- 10. Multi-purpose storage area: 14.23 m<sup>2</sup>
- 11. Washrooms of man and woman: 14.23 m<sup>2</sup>



SOUTH ELEVATION

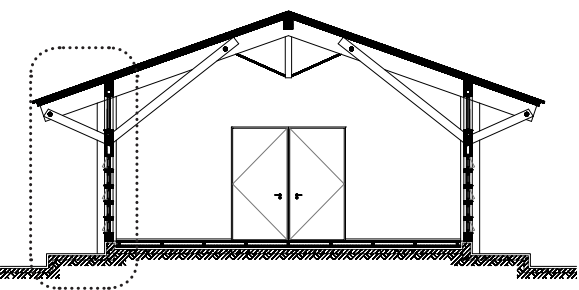


NORTH ELEVATION

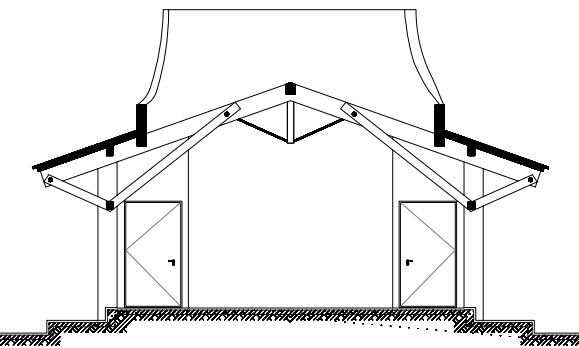




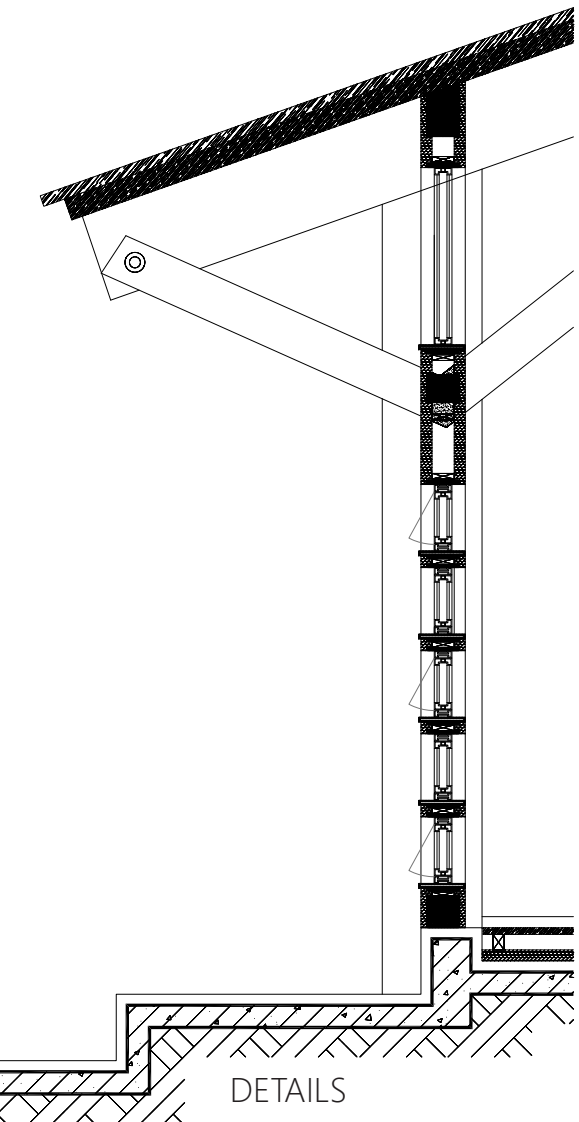
LARGE TRAINING HALLS



SECTION 1



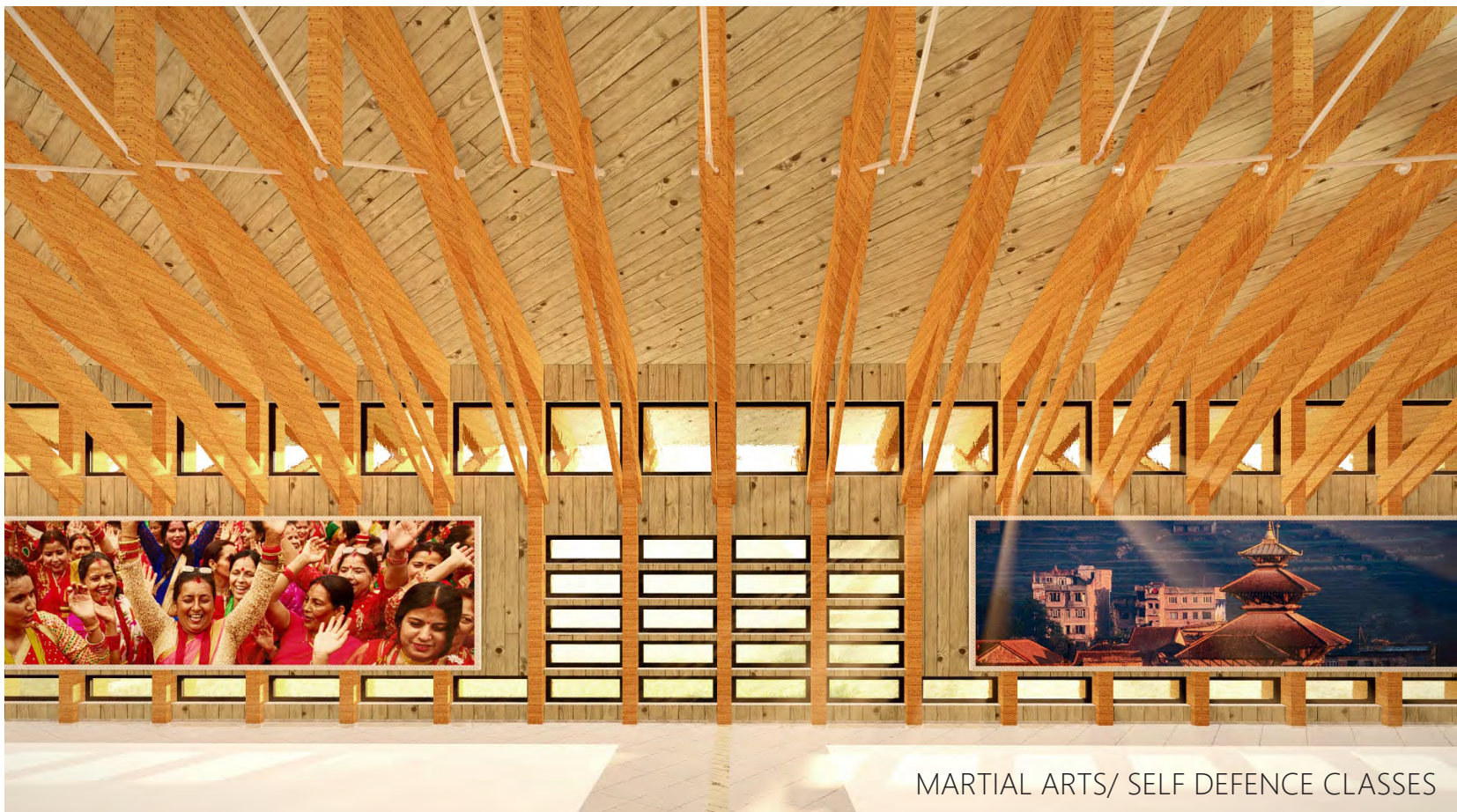
SECTION 2



DETAILS



LARGE TRAINING HALLS



MARTIAL ARTS/ SELF DEFENCE CLASSES